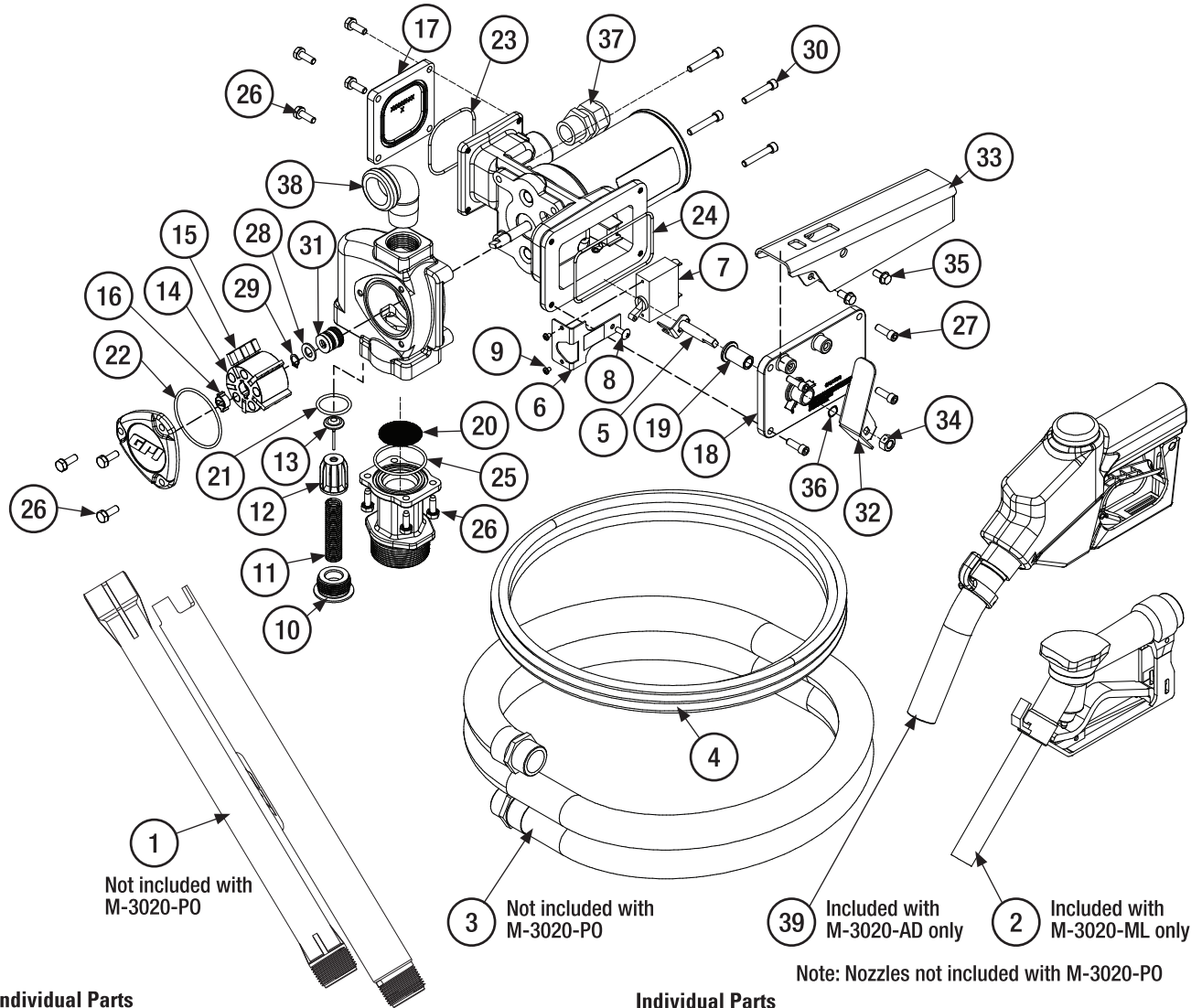


ILLUSTRATED PARTS DRAWING: M-3020



Individual Parts

Item No.	Part No.	Description	Req'd.
1	110241-01	Suction Pipe Assembly.....	1
2	110155-24	Nozzle, Manual Leaded, 1" NPT.....	1
3	110188-1	Fuel Hose, 1 NPT x 1 x 12'.....	1
4	110265-02	Power Cord, 12-2, 18'.....	1
5	133086-1	Switch Actuator Assembly.....	1
6	144125-01	Switch Bracket.....	1
7	902006-555	Switch, Circuit Breaker for 12 VDC.....	1
8	904002-25	Screw, Machine, Truss Head, #10-32 x 1/2".....	1
9	904005-56	Screw, Pan Head, Stainless Steel, #6-32 x 3/16".....	2
10	144102-01	Cap, Bypass Valve.....	1
11	144103-01	Spring, Bypass Valve.....	1
12	144104-01	Poppet, Bypass Valve.....	1
13	144105-01	Orifice Seal, Bypass Valve.....	1
14	144110-01	Rotor, 5-Vane or Kit A	1
15	144111-01	Carbon Sliding Vane, 1.50" or Kit A	5
16	144112-01	Drive Key or Kit A	1
17	144124-01	Cover, Terminal Box.....	1
18	144126-01	Cover, Switch Box.....	1
19	144127-01	Switch Bushing.....	1
20	144140-01	Inlet Screen.....	1
21	901002-50	O-Ring, -916, 1.171 ID x .116, NBR.....	1
22	901004-10	O-Ring, -143, 2.425 ID x .103, NBR or Kit A	1
23	901004-12	O-Ring, -148, 2.737 ID x .103, NBR.....	1
24	901004-13	O-Ring, -156, 4.237 ID x .103, NBR.....	1
25	901004-26	O-Ring, -135, 1.925 ID x .103, NBR.....	1

For more information refer to Owner's Manual 922099-01

Individual Parts

Item No.	Part No.	Description	Req'd.
26	904002-23	Screw/Washer Assy, SEMS, 1/4-20 x 3/4".....	11
27	904007-15	Screw, Socket Head Cap, Hex, 1/4"-20 x 3/16".....	4
28	904008-53	Washer, .416, .750 x .063, Aluminum or Kit B	1
29	904008-54	Retaining Ring, 10mm or Kit B	1
30	904008-57	Screw, HSHC, 1/4-20 x 1 1/2".....	4
31	906010-01	Shaft Seal, 10mm, NBR or Kit B	1
32	144129-01	Switch Lever.....	1
33	144132-01	Cover, Closed Nozzle.....	1
34	904006-62	Nut, Lock, Hex, Center Type, 3/8-16.....	1
35	904006-86	Screw, Tapping, Hex Head, 1/4-20 x 1/2".....	2
36	904008-52	Wave Overlap Spring.....	1
37	902007-96	Strain Relief.....	1
38	904004-43	Street Elbow, 1" NPT.....	1
39	906008-70	Nozzle, Automatic Diesel, 1" NPT, UL.....	1

Kits and Accessories

	Part No.	Description
A	501500-03	VANE KIT, O-Ring #22, 7 Vanes #15, Drive Key #16
B	501500-04	SHAFT SEAL KIT, Retaining Ring #29, Shaft Seal #31, Spacer Washer #28
	133242-1	Nozzle Hook Only
	904001-88	Set Screw Only